

## Company Profile

Since its establishment, SonoScape has been committed to providing high quality medical equipment for the healthcare sector. SonoScape specializes in the development and production of diagnostic ultrasound solutions. By introducing advanced imaging techniques, SonoScape has improved diagnostic accuracy and therefore enabled better health outcomes. Since 2002, SonoScape has reached and benefited millions of people. With the world in mind, SonoScape will continue providing more effective and accessible healthcare solutions, through persistent innovation and passion for life.

## Quote from the Analyst of

"The Frost & Sullivan Award for Growth Leadership is presented to the company that has demonstrated excellence in capturing the highest annual compound growth rate for the last 3 years...The sales of ultrasound devices contribute an overwhelming proportion of total revenue, helping the company strengthen its leading position to outperform the competitors in the marketplace. With increasing penetration of mid-to high-end ultrasound devices, SonoScape is expected to see significant growth potential in the future..."

## Company Milestone

- 2002: Company Founded in Shenzhen, China
- 2003: Released SSI-1000: the 1<sup>st</sup> 15" Portable Color Doppler system in China
- 2004: Released SSI-2000: the 1<sup>st</sup> PC platform Color Doppler system in China
- 2005: Received the "High Technology Company" award from the PRC government
- 2007: Received "CHINA TOP BRAND" award in the Medical Equipment Industry
- 2007: Released the 1<sup>st</sup> Real time 4D ultrasound system in China
- 2008: Received "European Entrepreneurial Company 2008" award from FROST & SULLIVAN
- 2008: Received "Flagship Company" award in the Medical Equipment Industry in China
- 2009: Received "Product Quality Leadership Award 2009" from FROST & SULLIVAN
- 2011: Received the Reddot 2011 Product Design Award for S20 in Essen, Germany
- 2013: Received "Ultrasound Market Growth Leadership Award, 2013" from FROST & SULLIVAN
- 2014: Received the iF Product Design Award 2014 for S9 in Munich, Germany



**SonoScape**

Yizhe Building, Yuquan Road, Shenzhen, 518051, China  
Tel: 86-755-26722890 Fax: 86-755-26722850  
E-mail: market@sonoscape.net www.sonoscape.com

**SonoScape**

*S22*



Caring for Life through Innovation



# *Bring Ultrasound Excellence to Anywhere*

SonoScape's S22 is a fully-featured ultrasound system in a slim and elegant package. It combines mobility with utility to fit in almost any clinical situation.

A host of proven and renowned technologies make such a difference, the clarity of the image improves accuracy and precision. The S22 is aimed at helping the patients and doctor feel more comfortable physically and emotionally during medical examination.

**S22**

# Brilliant Performance



With high definition resolution and unmatched penetration, S22 helps you improve the clinical confidence by affording exceptional image quality especially in detecting abnormalities or small lesion. Furthermore, intuitive protocols will simplify image acquisition process and enhance the overall image quality. They empower you to enhance spatial and contrast resolution and sharpen border definition for outstanding image clarity. Focus on image quality, S22 fulfills the utmost value during diagnosis.

- **Phase Inversion Harmonic Imaging ( PIH )**  
The harmonic signals are fully preserved without degradation of the acoustic information, which makes it possible for S22 to image high-level details and improved contrast resolution by reducing noise and clutter in the visualizing of subtle lesions, small parts, vascular and so on.
- **Special Compound imaging ( SCI )**  
Spatial Compound Imaging utilizes several lines of sight for optimal contrast resolution, speckle reduction and border detection, with which S22 is ideal for superficial and abdominal imaging with better clarity and improved continuity of structures.
- **Speckle Reduction Imaging (  $\mu$ -scan )**  
The second-generation  $\mu$ -scan technology greatly improves the visibility of organs and lesions with improved, high-definition contrast resolution that suppresses speckle artifact while maintaining real tissue architecture.

S22 boast its slender contour with cohesive and intuitive solution package which enable doctors to focus more on the patient, and much less on operation steps. Optimized file management, innovative console layout and SonoScape's uniquely renowned transducer technologies address every aspect of comfort for both doctors and patients.



### Brand-new and powerful platform

Evaluating patients in today's demand in clinical environment, aim to reduced time and bring doctor more confidence, compact with the latest technology and optimized work flow, Sonoscape release the latest platform, can supply with abundant and dedicated clinical tools:

- Full range of transducers
- Customizable menu
- Enhanced work flow

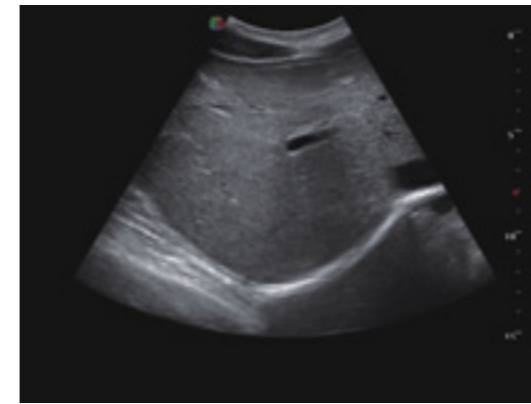
### Slim and ultra-compact design

- Control Panel
  - **18.5** 'inch flat LED Monitor
- The latest backlight monitor, use the highest standard, try to provide the most contrast image and better color expression performance.
- Simple user interface

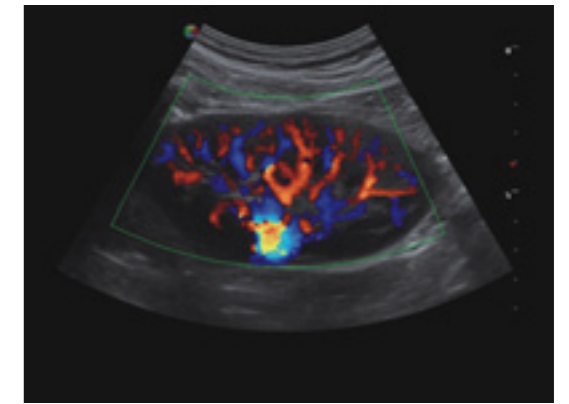
### Light mobility, easy control

- Bar scanner
- Remote Control
- Wireless networking technology

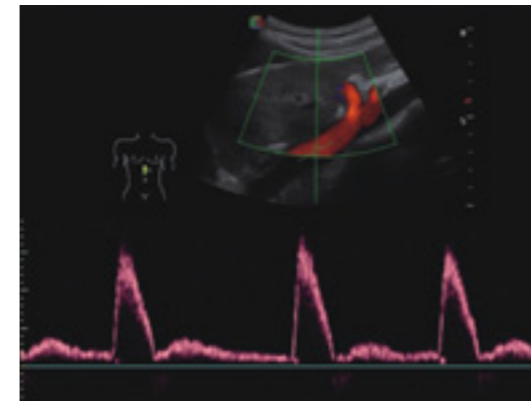
# Superior Imaging Quality



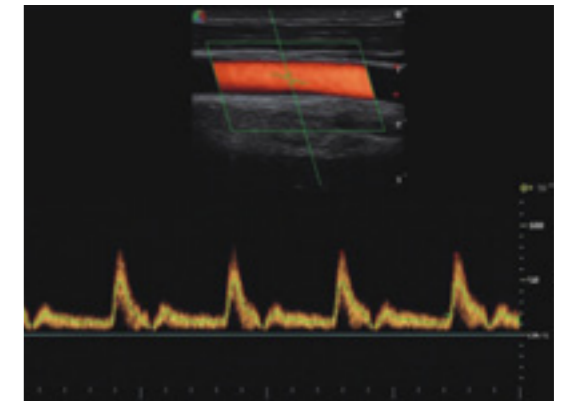
2D Liver



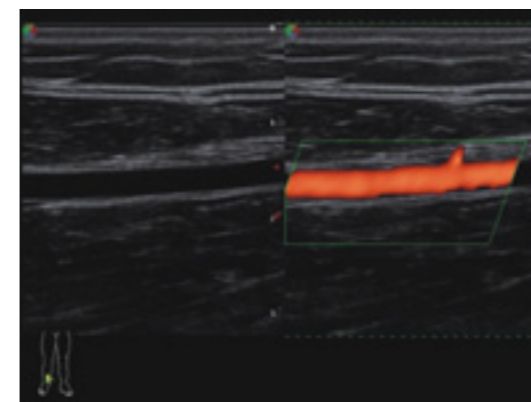
Kidney Flow



Abdominal Aorta PW



Common Carotid Artery PW



Dual Dynamic Display of Posterior Tibial Artery



Fetus