

## Company Profile

Since its establishment, SonoScape has been committed to providing high quality medical equipment for the healthcare sector. SonoScape specializes in the development and production of diagnostic ultrasound solutions. By introducing advanced imaging techniques, SonoScape has improved diagnostic accuracy and therefore enabled better health outcomes. Since 2002, SonoScape has reached and benefited millions of people from over 100 countries. With the world in mind, SonoScape will continue providing more effective and accessible healthcare solutions, through persistent innovation and passion for life.

## Quote from the Analyst of

FROST & SULLIVAN

"SonoScape Co. Ltd. has exhibited exceptional entrepreneurial capabilities ... The company's priority in maintaining high levels of quality in its product lines is well supported by the negligible after-sales costs associated with its ultrasound systems. Also with the launch of SSI-1000, the hand carried ultrasound with multiple clinical applications; SonoScape has made significant strides towards establishing itself as a global medical equipment manufacturer."

Mr. Krishanu Bhattacharjee

## Company Milestone

- 2002: Company Founded in Shenzhen, China
- 2003: Released SSI-1000: the 1<sup>st</sup> 15" Portable Color Doppler system in China
- 2004: Released SSI-2000: the 1<sup>st</sup> PC platform Color Doppler system in China
- 2005: Received the "High Technology Company" award from the PRC government
- 2007: Received "CHINA TOP BRAND" award in the Medical Equipment Industry
- 2007: Released the 1<sup>st</sup> Real time 4D ultrasound system in China
- 2008: Received "European Entrepreneurial Company 2008" award from FROST & SULLIVAN
- 2008: Received "Flagship Company" award in the Medical Equipment Industry in China
- 2009: Received "Product Quality Leadership Award 2009" award from FROST & SULLIVAN in London, UK
- 2011: Received the Reddot 2011 Product Design Award for S20 in Essen, Germany

# S2V BW

Capable B/W Ultrasound for Animal Care



ISO 13485



**SonoScape**

СОНОСКЕЙП БЪЛГАРИЯ  
Варна, ул. Кирил Шиваров 9 Б  
тел: +35952612259 факс: +35952612258  
E-mail: office@sonoscape.bg  
www.sonoscape.bg

**SonoScape**

Caring for Life through Innovation

www.sonoscape.bg

# S2V BW

## Capable B/W Ultrasound for Animal Care

Based on SonoScape's color Doppler ultrasound platform, S2V BW is designed to provide multiple solutions to veterinarians. Its compact design and full functionality will bring you an unparalleled experience in every area of veterinary ultrasound.



## Compact yet Uncompromising Ergonomics

The S2V BW is designed to perform both in the Exam room or in the field. Weighing less than 8 kilogram, S2V BW combines flexibility with revolutionary technology allowing veterinary examination without compromise.

- 15 inch high resolution LCD monitor
- Large imaging area with 170 degree viewing angles
- Two universal transducer sockets for quick transducers switch
- Built-in high capacity lithium battery
- Abundant peripherals for efficient data management

## Clearer 2D Images with Color Doppler Optional

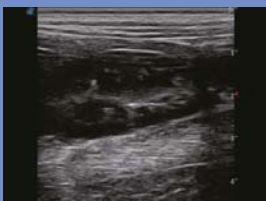
Complete with SonoScape's superior imaging technologies, S2V BW will help you acquire clear diagnostic data and deliver enhanced image quality. Configured with an easy Colour Doppler upgrade path, this system can address scanning needs across a wide range of animal clinical applications into the future.

- Compound Imaging
- Tissue Harmonic Imaging
- Trapezoidal Imaging
- Pulsed Wave Doppler (optional)
- $\mu$ -scanSpeckle Reduction (optional)
- Panoramic Imaging (optional)

## Clever system styled for user comfort

The S2V BW is designed to give veterinarians optimum image quality with minimal steps significantly reducing the time needed to perform the examination. Built on the new platform which provides patient-oriented solutions for smoother workflow, the S2V BW will speed up the veterinarians exam process with shortcut keys for greater operating convenience.

- Fully customized user settings: Multiple user-defined presets, function keys, formulas, measurements, report layout for each clinical specialties®
- m-Tuning® function: Single button image optimization for 2D and PW Doppler to minimize key strokes and
- Smart patient file management: Allow images and clips to be stored, reviewed and exported in different formats and finally printed out on different DICOM and PC printers
- Full data solutions: 320G Hard drive, Complete DICOME 3.0, Dual USB port, VGA, S-Video, LAN port, video printer, USB laser/jet printer.....



Canine kidney



Canine Gallbladder



Canine four Chamber View



Feline\_Liver



Canine Stomach



Canine Papillary Muscle